

COVID-19 GUIDELINES

MITIGATION PLAN

FALL 2021

SWEETHAVEN CHRISTIAN ACADEMY

5000 WEST NORFOLK ROAD, PORTSMOUTH, VA 23703

SWEETHAVEN SAFELY PROVIDES ON-CAMPUS INSTRUCTION FIVE DAYS PER WEEK.

Sweethaven Christian Academy (SCA) has established COVID mitigation policies that allow SCA to continue its mission of providing students with an excellent education in a nurturing environment so that our students are prepared for a life of service to God and a joyful eternity with Him.

These policies were developed using guidance from the Centers for Disease Control (CDC), American Academy of Pediatrics (AAP), Virginia Department of Health (VDH), American Association of Christian Schools (AACCS), Old Dominion Association of Church Schools (ODACS), and other professional organizations, and will likely change as community factors and local guidance change. [We are monitoring and following current guidance, yet we know that ultimately “safety is of the Lord” \(Proverbs 21:31\). We are seeking God’s guidance and protection above all.](#)

As we enter our second school year amid the COVID pandemic, SCA continues to prioritize on-campus instruction 5 days per week. By God’s grace and with the help of our faculty/staff and parents/guardians, SCA remained open throughout the 2020-2021 school year. **We need your help again** in implementing proper controls that will allow in-person instruction to continue this year. [Our goal is to maintain a COVID-accommodated environment where both academic and spiritual growth will flourish.](#)

IMPORTANT DATES

August 26 – Open House, 1:00-6:00 p.m., by appointment only. Contact the office to make your appointment. Bring school supplies to Open House. Students in K5-12th grade must be in uniform.

August 30 – First Day of School. Classes begin at 8:10 a.m. Plan to arrive early to allow time for COVID check-in procedures. Parents of K5-12th grade students will not be admitted past the front office. Preschool parents should walk their children to the classroom but may not access any other area.

I. SYMPTOM SCREENING

- A. Every family must perform a daily self-screening before coming to school. (See Appendix for the VDH Algorithm for Evaluating a Child with COVID-19 Symptoms or Exposure.)
- B. Faculty and staff will self-screen and log their assessment daily.
- C. Students must pass a symptom screening at the school office before being admitted past the security door. (See Section III for limitations on visitors.)
- D. SCA uses no-touch thermometers for screenings.



II. ILLNESS POLICY

- A. Individuals with a fever of 100.4° F or greater, or with two or more COVID symptoms (cough, difficulty breathing, chills, muscle pain, headache, sore throat, new loss of taste or smell, nasal congestion, diarrhea, vomiting, etc.) that are not otherwise explained, may not return to school until 72 hours have passed since recovery (defined as resolution of fever without the use of medications and/or improvement in symptoms listed above).
- B. Individuals with COVID symptoms may return to school 24 hours after recovery with an alternate diagnosis (i.e. strep throat) and approval in writing by their healthcare provider.
- C. For further clarification, see the VDH Algorithm for Evaluating a Child with COVID-19 Symptoms or Exposure in the Appendix.
- D. Students returning to school after illness must pass a temperature and health screening before being admitted to school.

III. VISITOR POLICY

- A. For the time being, K-12 parents/guardians will no longer be able to visit the cafeteria or classrooms during the school day and should not proceed beyond the school office. Outside drop-off is preferred.
- B. Preschool parents/guardians may walk their child to the preschool classroom but should not access other parts of the building.
- C. Parents/guardians and visitors entering the school building should wear face-coverings.

IV. STUDENT HEALTH AND SAFETY

- A. Students will be instructed and regularly reminded of proper hygiene and hand-washing practices. Visual reminders will be posted in the restrooms.
- B. Hand sanitizer will be utilized in every classroom, at the school entrance, and at other locations throughout the building.
- C. At a minimum, students will wash/sanitize their hands at the beginning and end of the school day, before and after lunch, before and after recess or use of playground equipment, and after using the restroom.
- D. To limit drinking fountain use and the germs associated with them, students are encouraged to bring capped, clear water bottles.
- E. Sharing of items (i.e. chalk, dry erase markers, etc.) will be limited.



- F. To benefit from fresh air and sunshine, outside play will be encouraged. Each group will follow a schedule which minimizes equipment sharing and interaction with other groups.
- G. Our faculty and student body will be praying together daily for health and safety for our school families and community.

V. CLEANING AND DISINFECTING

- A. Restrooms will be cleaned and disinfected daily.
- B. Classroom desks and computer stations will be disinfected daily.
- C. Public high-touch areas will be disinfected throughout the day and after school.
- D. The school health room will be disinfected after each use.

VI. CAFETERIA

- A. Cafeteria staff will follow food service protocols for food safety, cleaning, and disinfecting.
- B. Students will be spaced apart on the cafeteria benches. Cafeteria tables will be disinfected between shifts. Some classes may eat in their classrooms.

VII. SOCIAL DISTANCING AND COHORTING

- A. Students' desks will be spaced to adhere to social distance standards and face in one direction when possible.
- B. Secondary locker assignments will allow for additional space between students.
- C. Students will be assigned to cohorts (groups) that will remain distanced from each other as much as possible. Cohorts will be utilized as much as possible for activities such as lunch, recess, homerooms, chapels, etc.

VIII. FACE COVERINGS

- A. Current guidance from the CDC, VDH, and VDOE strongly recommends that all staff and children ages two and older wear masks when indoors, regardless of vaccination status, to the extent practicable.
- B. Parents who would like their child to wear a face mask all the time, or as much as possible, should notify the classroom teacher.

IX. COVID POSITIVE

- A. A COVID-positive student, faculty, or staff member may not return to school until 10 days have passed since symptoms first appeared (or 10 days from the positive test if asymptomatic) AND at least 24 hours with no fever without the use of fever-reducing medications AND other symptoms of COVID-19 are improving.
- B. Mandatory reporting: If a student, faculty, or staff member tests positive for COVID-19, the school office must be notified as soon as possible.
- C. If an individual in one's home tests positive for COVID-19, students or employees in the household should also stay home (i.e., self-quarantine) for a minimum of fourteen days.
 - a. Someone who has been fully vaccinated and shows no symptoms of COVID-19 does not need to quarantine. However, fully vaccinated people should get tested 3-5 days after their exposure, even if they do not have symptoms, and wear a mask indoors in public for 14 days following exposure or until their test result is negative.
 - b. Someone who had COVID-19 illness within the previous 3 months AND has recovered AND remains without COVID-19 symptoms does not need to quarantine.

- D. SCA prioritizes on-campus instruction; however, SCA remains ready to transition to online learning if local health officials require a temporary building closure.

X. CONSIDERATIONS FOR FAMILIES

- A. Parents/guardians will need to complete and sign a COVID-19 waiver for each child that attends SCA.
- B. Thermometers—each family should purchase and utilize a thermometer for temperature checks every morning before entering school. SCA recommends having one in your vehicle.
- C. Every student should bring a refillable water bottle to school every day. Bottles will be refilled at snack, lunch, or between classes.
- D. Arrival before 8:10 a.m. and dismissal at 3:10 p.m. will remain at normal times.
- E. After dropping off a child at school, a parent/guardian should be ready to answer the phone in case the child exhibits symptoms during check-in screening. Parents should be accessible throughout the day in case symptoms arise.

XI. EXTRACURRICULAR ACTIVITIES

- A. SCA will continue to provide an excellent physical education class. Students will wash/sanitize their hands before and after class.
- B. Private piano lessons will continue. A limited number of lessons are available.
- C. Elementary specials classes will also continue.

XII. VIRTUAL LEARNING

- A. Students receive the most benefit from in-person instruction. Therefore, SCA will not offer Virtual Learning as a full-time option during the 2021-2022 school year.
- B. Students excluded from school for an extended time due to illness or COVID policies may temporarily use Virtual Learning to keep up with their classes.

APPENDIX: VDH ALGORITHM FOR EVALUATING A CHILD

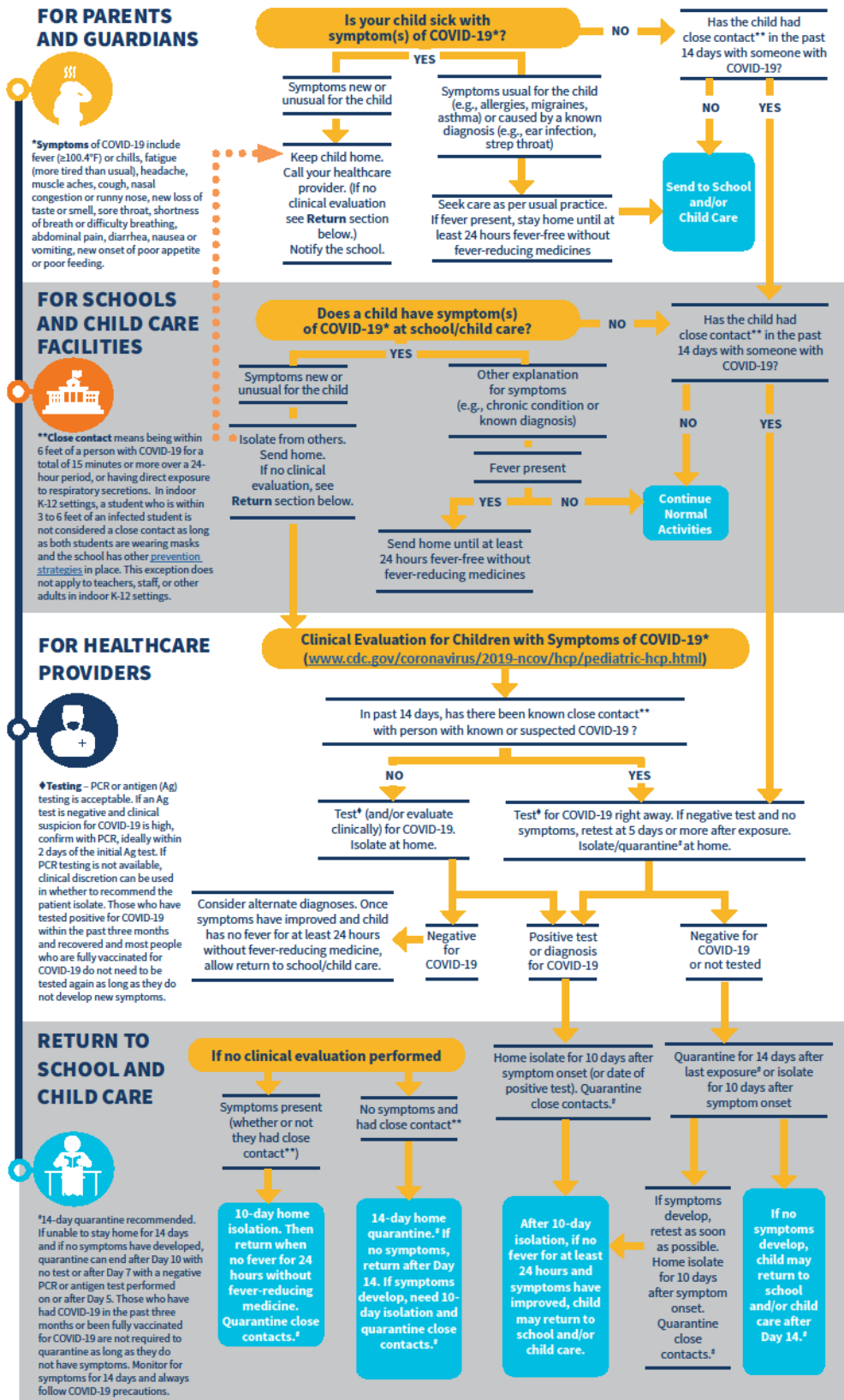
VDH Algorithm for Evaluating a Child with COVID-19 Symptoms or Exposure

[This algorithm is for diagnostic purposes, and should not be used for screening testing]

VDH VIRGINIA DEPARTMENT OF HEALTH
vdh.virginia.gov

Current as of 7/23/2021.

<https://www.vdh.virginia.gov/content/uploads/sites/182/2020/10/Child-School-COVID-19-Algorithm-Infographics2020-FINAL.pdf>



Sweethaven Christian Academy exists to prepare students for a life of service to God and a joyful eternity with Him.

Developed by Sweethaven Christian Academy using guidance from the Centers for Disease Control (CDC), American Academy of Pediatrics (AAP), Virginia Department of Health (VDH), American Association of Christian Schools (AACCS), Old Dominion Association of Church Schools (ODACS), and other professional organizations.

Specific administrative and faculty/staff procedures for implementing this plan are contained in handbooks and other documentation.

SCA reserves the right to adjust these guidelines as community factors and local guidance change.